

PRODUCT INFORMATION PACKET

Model No: 256THTNA8071
Catalog No: Y993
20,1800,TENV,256TC,3/60/230/460
2000:1 Brake Motor



Regal and Marathon are trademarks of Regal Beloit Corporation or one of its affiliated companies.
©2019 Regal Beloit Corporation, All Rights Reserved. MC017097E



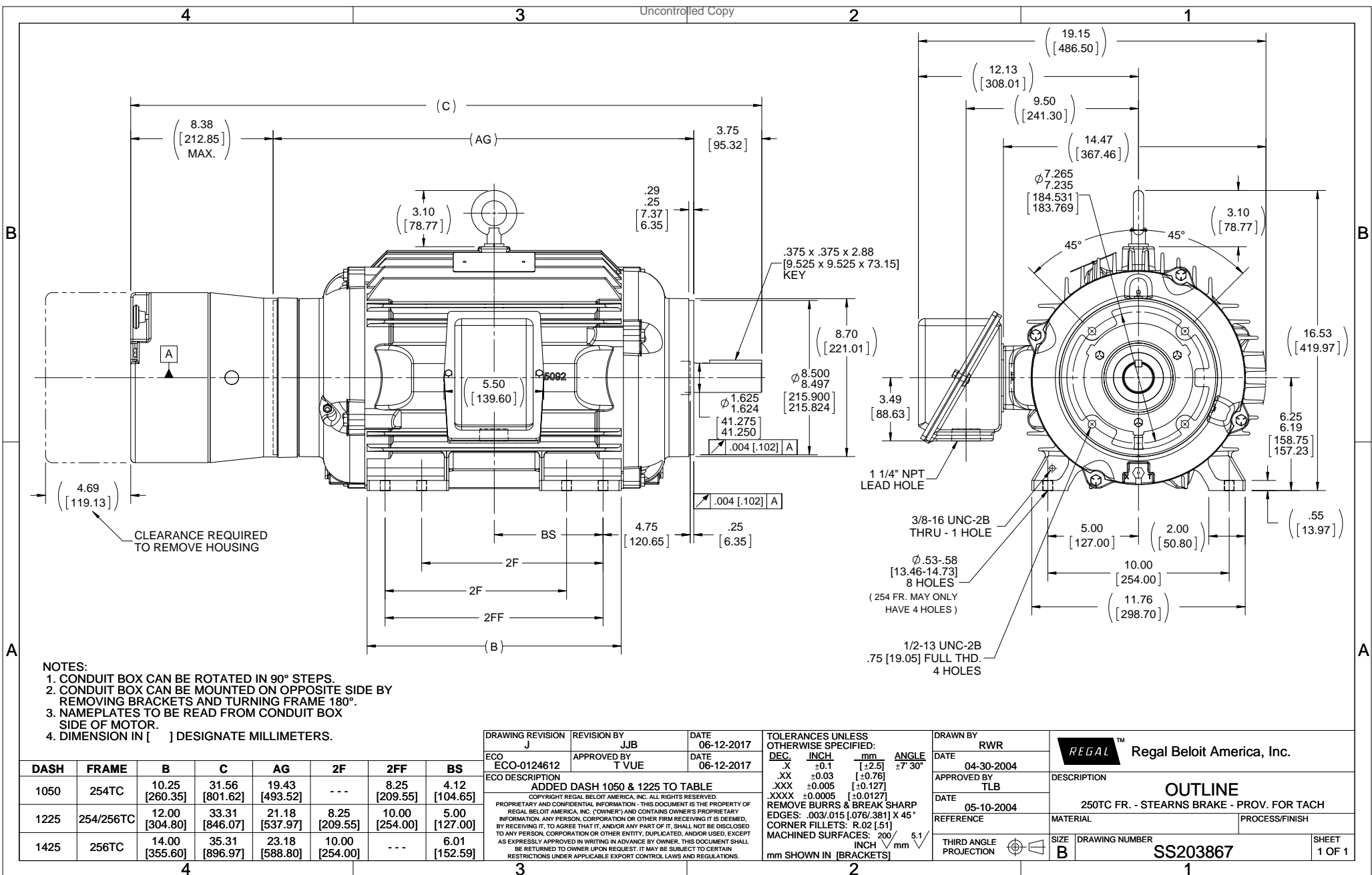


Nameplate Specifications

Output HP	20 HP	Output KW	14.9 kW
Frequency	60 Hz	Voltage	230/460 V
Current	52.0/26.0 A	Speed	1770 RPM
Service Factor	1	Phase	3
Efficiency	93.6 %	Duty	Continuous
Insulation Class	F	Design Code	INV
KVA Code	N	Frame	256TC
Enclosure	Totally Enclosed Non Ventilated	Overload Protector	No
Ambient Temperature	40 °C	Drive End Bearing Size	6309
Opp Drive End Bearing Size	6309	UL	Recognized
CSA	Y	CE	Y
IP Code	43		

Technical Specifications

Electrical Type	Squirrel Cage Inverter Duty	Starting Method	Inverter Only
Poles	4	Rotation	Reversible
Mounting	Rigid Base	Motor Orientation	Horizontal
Drive End Bearing	Ball	Opp Drive End Bearing	Ball
Frame Material	Cast Iron	Shaft Type	T
Overall Length	35.31 in	Frame Length	14.25 in
Shaft Diameter	1.625 in	Shaft Extension	3.75 in
Assembly/Box Mounting	F1/F2 Capable		
Outline Drawing	B-SS203867-1425	Connection Diagram	A-EE7308T



- NOTES:
 1. CONDUIT BOX CAN BE ROTATED IN 90° STEPS.
 2. CONDUIT BOX CAN BE MOUNTED ON OPPOSITE SIDE BY REMOVING BRACKETS AND TURNING FRAME 180°.
 3. NAMEPLATES TO BE READ FROM CONDUIT BOX SIDE OF MOTOR.
 4. DIMENSION IN [] DESIGNATE MILLIMETERS.

DASH	FRAME	B	C	AG	2F	2FF	BS
1050	254TC	10.25 [260.35]	31.56 [801.62]	19.43 [493.52]	---	8.25 [209.55]	4.12 [104.65]
1225	254/256TC	12.00 [304.80]	33.31 [846.07]	21.18 [537.97]	8.25 [209.55]	10.00 [254.00]	5.00 [127.00]
1425	256TC	14.00 [355.60]	35.31 [896.97]	23.18 [588.80]	10.00 [254.00]	---	6.01 [152.59]

DRAWING REVISION	REVISION BY	DATE
J	JJB	06-12-2017
ECO-0124612	T VUE	06-12-2017

ECO DESCRIPTION
 ADDED DASH 1050 & 1225 TO TABLE

COPYRIGHT REGAL BELOIT AMERICA, INC. ALL RIGHTS RESERVED.
 PROPRIETARY AND CONFIDENTIAL INFORMATION - THIS DOCUMENT IS THE PROPERTY OF REGAL BELOIT AMERICA, INC. (OWNER) AND CONTAINS OWNER'S PROPRIETARY INFORMATION. ANY PERSON, CORPORATION OR OTHER FIRM RECEIVING IT IS DEEMED, BY RECEIVING IT, TO AGREE THAT IT, AND/OR ANY PART OF IT, SHALL NOT BE DISCLOSED TO ANY PERSON, CORPORATION OR OTHER ENTITY, DUPLICATED, AND/OR USED, EXCEPT AS EXPRESSLY APPROVED IN WRITING IN ADVANCE BY OWNER. THIS DOCUMENT SHALL BE RETURNED TO OWNER UPON REQUEST. IT MAY BE SUBJECT TO CERTAIN RESTRICTIONS UNDER APPLICABLE EXPORT CONTROL LAWS AND REGULATIONS.

TOLERANCES UNLESS OTHERWISE SPECIFIED:

DEC.	INCH	mm	ANGLE
.X	±0.1	[±2.5]	±7°-30'
.XX	±0.03	[±0.76]	
.XXX	±0.005	[±0.127]	
.XXXX	±0.0005	[±0.0127]	

REMOVE BURRS & BREAK SHARP EDGES: .003/.015 [076/.381] X 45°
 CORNER FILLETS: R.02 [51]
 MACHINED SURFACES: 200 $\sqrt{5.1}$ INCH \sqrt{mm}
 mm SHOWN IN [BRACKETS]

DRAWN BY	DATE
RWR	04-30-2004
APPROVED BY	DATE
TLB	05-10-2004

REFERENCE

THIRD ANGLE PROJECTION

REGAL™ Regal Beloit America, Inc.

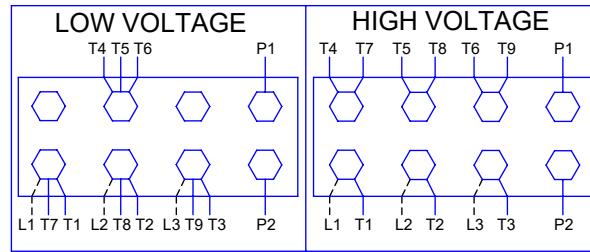
DESCRIPTION
OUTLINE
 250TC FR. - STEARNS BRAKE - PROV. FOR TACH

MATERIAL

PROCESS/FINISH

SIZE **B** DRAWING NUMBER **SS203867** SHEET **1 OF 1**

HIGH VOLTAGE



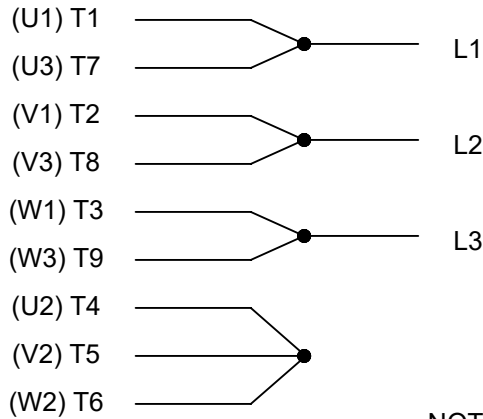
**THREE PHASE
DUAL VOLTAGE MOTOR**

THERMO-PROTECTORS
CONNECTED IN SERIES



NOTE FOR FACTORY USE ONLY:
TO SURGE TEST FOR COMMON CONNECT:
HIGH VOLT: CONNECT P1 TO T1
THEN P2 TO L1
LOW VOLT: CONNECT P1 TO T1 & T7,
THEN P2 TO L1

LOW VOLTAGE



VIEW OF TERMINAL END

NOTE: LEAD'S COLOR CAN BE YELLOW OR WHITE FOR MT2 PLANT

DRAWING REVISION T	REVISION BY ZR	DATE 01-14-2019		DRAWN BY SMC	Regal Beloit America, Inc.
ECO ECO-0159915	APPROVED BY DR	DATE 01-15-2019		DATE 05-13-1992	
ECO DESCRIPTION ADDED TERMINAL CONNECTION DIAGRAM				APPROVED BY TB	DESCRIPTION CONN DIAGRAM-INTERNAL 3 PHASE - DUAL VOLTAGE MOTOR
<small>COPYRIGHT REGAL BELOIT AMERICA, INC. ALL RIGHTS RESERVED. PROPRIETARY AND CONFIDENTIAL INFORMATION - THIS DOCUMENT IS THE PROPERTY OF REGAL BELOIT AMERICA, INC. ("OWNER") AND CONTAINS OWNER'S PROPRIETARY INFORMATION. ANY PERSON, CORPORATION OR OTHER FIRM RECEIVING IT IS DEEMED, BY RECEIVING IT, TO AGREE THAT IT, AND/OR ANY PART OF IT, SHALL NOT BE DISCLOSED TO ANY PERSON, CORPORATION OR OTHER ENTITY, DUPLICATED, AND/OR USED, EXCEPT AS EXPRESSLY APPROVED IN WRITING IN ADVANCE BY OWNER. THIS DOCUMENT SHALL BE RETURNED TO OWNER UPON REQUEST. IT MAY BE SUBJECT TO CERTAIN RESTRICTIONS UNDER APPLICABLE EXPORT CONTROL LAWS AND REGULATIONS.</small>				DATE 05-13-1992	MATERIAL
			REFERENCE EE7308/EE7300	THIRD ANGLE PROJECTION	SIZE A

CERTIFICATION DATA SHEET

Model#: 256HTNA8071 CB
 CONN. DIAGRAM: A-EE7308T
 OUTLINE: B-SS203867-1425

WINDING#: K2564267 NONE 1
 ASSEMBLY: F1/F2 CAPABLE

TYPICAL MOTOR PERFORMANCE DATA

HP	KW	SYNC. RPM	F.L. RPM	FRAME	ENCLOSURE	KVA CODE	DESIGN		
20	14.9	1800	1770	256TC	TENV	N	INV		
PH	Hz	VOLTS	FL AMPS	START TYPE	DUTY	INSL	S.F	AMB°C	ELEVATION
3	60	230/460	52/26	INVERTER ONLY	CONTINUOUS	F3	1.0	40	3300

FULL LOAD EFF: 93.6	3/4 LOAD EFF: 93.6	1/2 LOAD EFF: 93	GTD. EFF	ELEC. TYPE	NO LOAD AMPS
FULL LOAD PF: 77	3/4 LOAD PF: 70	1/2 LOAD PF: 57	93	SQ CAGE INV DUTY	29 / 14.5

F.L. TORQUE	LOCKED ROTOR AMPS	L.R. TORQUE	B.D. TORQUE	F.L. RISE°C
59.5 LB-FT	600 / 300	200 LB-FT 336	325 LB-FT 546	90

SOUND PRESSURE @ 3 FT.	SOUND POWER	ROTOR WK ²	MAX. WK ²	SAFE STALL TIME	STARTS /HOUR	APPROX. MOTOR WGT
62 dBA	72 dBA	3.7 LB-FT ²	-LB-FT ²	-SEC.	-	485 LBS.

EQUIVALENT WYE CKT.PARAMETERS (OHMS PER PHASE)

R1	R2	X1	X2	XM
0.2201	0.1917	0.6745	0.68444	18.2044
RM	ZREF	XR	TD	TD0
1689.8	14.2	3.4	0.01	0.26

*** SUPPLEMENTAL INFORMATION ***

DE BRACKET TYPE	ODE BRACKET TYPE	MOUNT TYPE	ORIENTATION	SEVERE DUTY	HAZARDOUS LOCATION	DRIP COVER	SCREENS	PAINT
C-FACE	BRAKE AND ENCODER	RIGID	HORIZONTAL	FALSE	NONE	FALSE	NONE	BLUE (ENAMEL)

BEARINGS	GREASE	SHAFT TYPE	SPECIAL DE	SPECIAL ODE	SHAFT MATERIAL	FRAME MATERIAL
DE	OPE				1045 HOT ROLLED (C-204)	CAST IRON
BALL	BALL	POLYREX EM	T	NONE		
6309	6309					

THERMOSTATS	PROTECTORS	WDG RTDs	BRG RTDs	THERMISTORS	CONTROL	SPACE /n HEATERS
TSTATS (NIC)	NOT	NONE	NONE	NONE	FALSE	NONE VOLTS

If Inverter equals NONE, contact factory for further information

INVERTER TORQUE: CONSTANT 2000.1
INV. HP SPEED RANGE: 2.0 X BASE SPEED
ENCODER: PROVISIONS ONLY
NORTHSTAR SL85
NONE NONE PPR
BRAKE: REGAL SUPPLIED AND MOUNT
NONE

*
 N
 O
 T
 E
 S
 *

STEARNNS	P/N 66378-22
87,000	NEMA 2
105 FT-LB	208-230/460-190/380 V
60/50 Hz	

DATE: 06/23/2017 04:59:45 AM

FORM 3531 REV.3 02/07/99

** Subject to change without notice.

